

What's New in West Chester!



Miami Learning Center Marks First Decade

Miami University's Voice of America Learning Center has completed its first decade of serving students, businesses, and organizations in our area. Opened in January 2009, the Learning Center offers Miami undergraduate and graduate courses at the Center's convenient location in the I-75 corridor.

This fall Miami completed a major renovation project, making the strategic move to relocate the Commerce Department from Miami's Regional Campuses to West Chester, and launching the Miami University Commerce Innovation Hub.

Commerce is one of the fastest growing bachelor degree programs at Miami's regional campuses, with more than 700 students currently enrolled in online, face-to-face, and hybrid classes. In 2018, graduates from the department's Small Business Management program earned an average salary of more than \$56,000, and 97% of the graduates were employed or furthering their education.

The Innovation Hub will bring together the faculty expertise of the Commerce Department, as new degree programs are developed to meet regional economic needs, and to offer non-credit professional training and development opportunities.

Commerce now joins Miami's nationally-ranked Professional MBA program that began at the Learning Center back in 2009. In addition, Miami offers graduate certifications, licensures and degree programs for educators, combining the Center's convenient location with Miami's TEAM scholarships for qualified teachers and administrators.

The Voice of America Learning Center works collaboratively with other sectors of our community through ongoing art exhibitions, and serving as a site for classes for Miami University's Institute for Learning in Retirement.

Community is Focus of West Chester's New Logo

It's a brand new day in West Chester Township.

Following a six month branding campaign, West Chester unveiled a new look this summer that reflects the community's strengths and personality in a modern way. The project began in February with workshops and focus groups spearheaded by township leadership in collaboration

with Guide Studio, and culminated in the development of a new logo in July.



"We wanted a logo that more clearly represented how our residents view our community and helps communicate more effectively about our strengths and the pride of our residents," said Barbara Wilson, director of public information & engagement for the Township.

The logo replaces the West Chester oval wordmark, an important part of the Township's legacy that had been in use since 1998. West Chester is committed to updating existing branded signage in a manner that is fiscally responsible, acknowledging that this process will take some time to complete.

As part of the rebrand, the West Chester Development Council logo also received a makeover. The new WCDC logo maintains its sunrise imagery while fitting the look and feel of the community's overarching brand palette.

Learn more about the logo's development and meaning, and see it in use, at WestChesterOH.org.



Ambassadors of Excellence Celebration at Ohio Eagle Distributing

The Budweiser Clydesdales recently paid a special visit to the team at Ohio Eagle Distributing in West Chester Township. The Clydesdales were part of the Ambassadors of Excellence Celebration, signifying the team at Ohio Eagle Distributing is among the best of the best of Anheuser--Busch Wholesalers in the country!

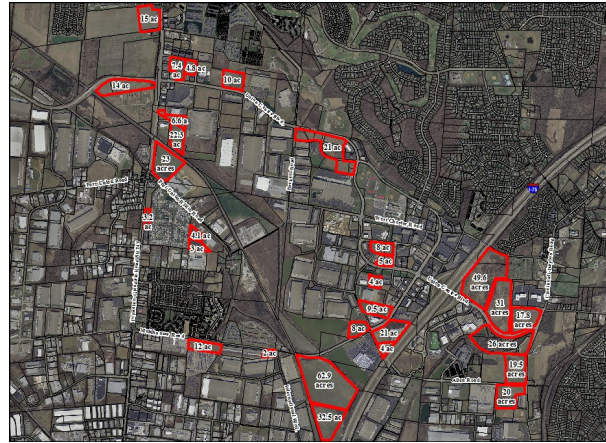
Over the past three years, Ohio Eagle Distributing in West Chester has ranked in the top three for national wholesaler performance. As a result of their efforts, Ohio Eagle was able to achieve AOE Ambassador status for the very first time. In 2018, these great results made them one of 38 wholesalers to achieve Gold Status and one of just 10 Anheuser--Busch Wholesalers to achieve AOE Ambassador status.

Ohio Eagle Distributing of West Chester is now part of this elite group of Anheuser--Busch Wholesalers.

West Chester: Built With You in Mind

West Chester is a proven destination for corporate investment displayed by the expansive growth over the past two decades, yet development opportunities still exist throughout the township with commercial sites of 1 to 60 acres still available. Office, manufacturing, research and properties with accessible infrastructure, frontage on I-75 or within two miles of an interstate interchange are available.

Contact Cathy Walton, Business Attraction and Expansion Manager for personalized assistance at 513-759-7325 or cwalton@westchesteroh.org.



OFFICE/MEDICAL PROJECTS



Ruthman Companies

Ruthman Companies, a leader in custom engineering pump solutions, announced it will relocate its corporate headquarters to an 8,138 square-foot office at 7236 Tylersville Road. Ruthman Companies is a family-owned business that began in 1912 and was based in Cincinnati to service the steamboats that traveled the Ohio River. In 1924, the first 'seal less' centrifugal pump was conceived by Alois Ruthman who gave birth to the trade name and Ruthman Companies flagship brand the Gusher Pumps.



Lee Hecht Harrison

Lee Hecht Harrison, the world's leading company in coaching and career transition helping companies transform their leaders and workforce, announced it will relocate to a 2,696 square-foot Class A office at 9277 Centre Pointe Drive in Centre Pointe Office Park. Lee Hecht Harrison uses its expertise in talent development and transition to deliver tailored solutions to help its clients transform their leaders and workforce so a company has the people and culture they need to evolve and grow.



Liberty Eyecare

Liberty Eyecare, providing quality vision care products and personalized optometric services, relocated its existing eyecare facility to a 2,396 square-foot office at 7580 Cox Lane in University Pointe. Liberty Eyecare's experienced staff offers comprehensive vision examinations and are trained in the diagnosis and treatment of a wide array of eye diseases, conditions and problems. Liberty Eyecare's mission is to provide the best eye care services possible using state-of-the-art diagnostic technology and eye care products available.

West Chester Pediatric Dentistry

west chester

|||| PEDIATRIC DENTISTRY



West Chester Pediatric Dentistry, specializing in pediatric dental services, announced it will relocate and expand its existing West Chester pediatric dental practice to a 3,906 square-foot medical office at 9215 Cincinnati Columbus Road/SR42 adjacent to its current location. Dr. Bracken Webb and the team at West Chester Pediatric Dentistry make dental visits fun by maintaining a safe environment, showering children with gifts and rewards, providing painless treatments, and teaching them to love caring for their smiles.

Scheeler Financial Group

Scheeler Financial Group, specializing in wealth management and financial planning, announced it will relocate to a 2,450 square-foot Class A office at 9078 Union Centre Boulevard in Union Centre Office Park. Scheeler Financial Group's areas of expertise include disability income planning, long-term care planning, investment strategies, education funding and life insurance planning.



Jewell Chiropractic

Jewell Chiropractic, specializing in chiropractic, holistic and preventative health practices, opened a 765 square-foot medical office at 9059 Cincinnati Dayton Road in Olde West Chester. Dr. Andrea Jewell has been practicing chiropractic care for more than 20 years and is dedicated to her patient's health and wellness.



Republic Bank and Trust

Republic Bank and Trust, specializing in commercial lending, announced it will open a 1,372 square-foot Class A office at 9110 West Chester Towne Centre Drive. Republic Bank and Trust is a community bank that supports local programs that foster growth, development, employment, and social and cultural enhancement in the communities where it exists.

INDUSTRIAL PROJECTS



Systecon

Systecon, developers and manufacturers of custom pumping and control systems for HVAC water systems, announced a 26,500 square-foot addition to its existing West Chester facility at 6121 Schumacher Park Drive in Schumacher Commerce Park. Systecon provides numerous solutions for data centers including modular chiller plants with waterside economizers, and modular evaporative cooling and modular pumping systems.



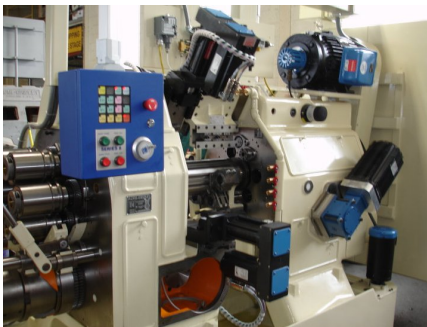
Eagle Specialty Vehicles

Eagle Specialty Vehicles, specializing in the design and manufacture of high quality specialty vehicles, announced it will relocate to an 83,825 square-foot facility at 64 Circle Freeway Drive. Eagle Specialty Vehicles offers a complete line of six-door limousines, funeral coaches, Lincoln MKT coaches, Cadillac XTS coaches, and more. Eagle Specialty Vehicles has been a recognized industry leader in overall quality, style, innovation and customer satisfaction for more than 30 years.



PretzelHaus Bakery

PretzelHaus Bakery, the next generation of soft pretzels manufactured the old-fashioned way, opened a 13,983 square-foot baking facility at 8800 Global Way off Union Centre Boulevard. Starting with only the highest-quality ingredients, every pretzel is baked and hand-twisted under the supervision of a certified master baker. Pretzels are pre-seasoned, shipped ready to heat and serve.



Sieb and Meyer USA

Sieb and Meyer USA, designs, manufactures and services a complete line of motion CNC control products, relocated to a 5,000 square-foot facility at 4884 Duff Drive off Princeton Glendale Road/SR747. In business for 47 years, Sieb and Meyer USA is a leader in milling, turning and high speed drilling applications with its unique 'zero following error' axis control algorithms.



Atlas Machine and Supply

Atlas Machine and Supply, a leading provider of industrial air compressors and equipment, announced it will relocate and expand its existing West Chester operations to a 27,159 square-foot facility at 8586 Trade Center Drive in the new West Chester Trade Center industrial park off Union Centre Boulevard. In business since 1907, Atlas Machine and Supply is a fourth generation, family-owned company that designs, repairs and re-manufactures complex equipment and components for industries and municipalities.



Ford Accessories of Cincinnati

Ford Accessories of Cincinnati, a wholesale Ford parts distribution division of The Suburban Collection, announced it will open a 40,771 square-foot distribution facility at 8556 Trade Center Drive in the new West Chester Trade Center development. Ford Accessories of Cincinnati will service Ford dealerships south of Columbus, west toward Indianapolis, most of Kentucky, and portions of West Virginia.

Industrial Sorting Services



Industrial Sorting Services, a premier supplier of cost effective sorting and containment services, relocated to a 78,975 square-foot facility at 9220 Glades Drive off Muhlhauser Road. Founded in 1999, Industrial Sorting Services provides qualified and trained inspectors for short or long term projects and inspectors that can be integrated into a company's work flow at any stage. Industrial Sorting Services is ISO 9001 Certified and services the automotive, pharmaceutical, marine and appliance industries.



Prime Now

Prime Now, Amazon's two-hour or less delivery service, leased a 41,740 square-foot warehouse at 8660 Jacquemin Drive off Union Centre Boulevard in the Jacquemin Logistics Center. Prime Now staff selects and packs fresh produce, meats, frozen items and more for speedy delivery to it Amazon Prime members.



First Choice Coffee

First Choice Coffee, one of the largest office coffee services in the nation, relocated its existing West Chester operations to an 11,580 square-foot facility at 6345 Centre Park Drive in Schumacher Commerce Park. In business for more than 50 years, First Choice Coffee offers its customers great tasting coffee and other beverages, the latest technology, environmentally-friendly product options, along with a wide variety of office and break room products.



Bone Dry Roofing

Bone Dry Roofing, providing high quality roofing, gutters and masonry services, relocated its existing West Chester operations to a 19,903 square-foot facility at 9940 Cincinnati Dayton Road. Bone Dry Roofing is a family-owned business with highly qualified, trained personnel and a 24/7 emergency services hotline.



Watco Supply Chain Services

Watco Supply Chain Services, a subsidiary of Watco Companies providing logistics and transportation services, leased a 73,750 square-foot facility at 5455 West Chester Road. Watco Supply Chain Services creates solutions to complex logistics problems for its customers as well as offering expanded services.

COMMERCIAL PROJECTS



[Planet Fitness](#)

Planet Fitness, one of the largest and fastest growing fitness centers in the United States, announced it will construct a 30,650 square-foot, two-story building at 7841 Fosters Lane off Liberty Way in West Chester Township. The mission at Planet Fitness is to enhance people's lives by providing a high-quality fitness experience in a welcoming, non-intimidating, Judgement Free Zone.



[Red Wing Shoes](#)

Red Wing Shoes, manufacturers of high quality footwear for more than 100 years, opened a 1,802 square-foot retail store at 7787 Cox Lane. Red Wing Shoes' purpose for more than a century has been to create quality footwear with premium products that will withstand all types of working conditions. The Red Wings Shoes location on Princeton Glendale Road in West Chester will remain open.



[Rally House](#)

Rally House, a specialty sports boutique offering a large selection of apparel, gifts and home décor representing national and local sports teams, announced it will open a 4,393 square-foot facility at 7702 Voice of America Centre Drive. The Rally House carries apparel and unique gift items and novelties for NCAA, NFL, MLB, NBA, NHL, MLS and regional-inspired teams as well.



[The Donut Hole by Milton's Donuts](#)

The Donut Hole by Milton's Donut, a new neighborhood doughnut shop, opened a 1,320 square-foot bakery at 8268 Princeton Glendale Road/SR747 near Smith Road. The Donut Hole by Milton's Donuts is a family-owned donut shop that serves fresh donuts, pastries and coffee daily.



[Sebastian Grooming Co.](#)

Sebastian Grooming Co., a full service barber shop for men and women who are looking for expertise and style, opened a 1,508 square-foot location at 4950 Union Centre Pavilion Drive at Union Centre Boulevard and Princeton Glendale Road/SR747 in the Union Centre Pavilion.

[Empire Premier Academy](#)



Empire Premier Academy, an elite all-star, award-winning dance program, opened a 5,967 square-foot studio at 4800 Interstate Drive off Princeton Glendale Road/SR747. Empire Premier Academy provides highly trained and certified instructors to teach students of all levels a variety of dance styles and disciplines.



HHH Brick Depot

HHH Brick Depot, a buyer and seller of Lego products, opened a 2,301 square-foot store, at 8781 Cincinnati Dayton Road in Olde West Chester. HHH Brick Depot offers a large selection of new Lego sets, mini figurines, Lego parts and accessories.



Fumee Smoke and Vape

Fumee Smoke and Vape, retail sales of tobacco and vape products, leased a 1,406 square-foot facility at 7831 Cincinnati Dayton Road near Tylersville Road.



Bank of America

Bank of America, a global financial institution serving individuals and business with a full range of banking and financial products and services, announced they will open a 2,795 square-foot retail branch office at 7903 Crossings of Beckett Drive in a new multi-tenant building on an outlot at the Kroger Marketplace development off Princeton Glendale Road.



Your CBD Store

Your CBD Store, retailer of therapeutic oils, will open a 1,200 square-foot store at 7731 Tylers Place Boulevard in the Plaza at Wetherington.



Tasty Pho and Crawfish Bar

Tasty Pho and Crawfish Bar, a new restaurant featuring Vietnamese and Cajun crawfish cuisine, announced it will open a 3,107 square-foot restaurant at 7741 Tylers Place Boulevard.

COMING SOON



[Twin Peaks](#)



[Chipotle](#)



[Another Broken Egg Cafe](#)



[Hampton Inn & Suites](#)



[United Dairy Farmers](#)



[Dominos](#)

NOW OPEN



[Saigon Noodle Bar](#)



[Milton's Donuts](#)



[Bambu Cincinnati](#)

OUR SUPPORTERS

The West Chester Development Council is a non-profit corporation, representing a public/private partnership between West Chester Township and the private business sector established to promote economic development initiatives. The following organizations have chosen to support the economic development and marketing efforts of West Chester Township and the West Chester Development Council.

[AK Steel](#)

[AstraZeneca](#)

[Bass Pro Outdoor World](#)

[ChappCo](#)

[Comcast](#)

[DRT Aerospace](#)

[First Financial Bank](#)

[GE Aviation](#)

[Griffin Capital](#)

[Park National Bank](#)

[Planes Companies](#)

[Republic Wire](#)

[Schumacher Dugan Construction](#)

[Street Partners](#)

[Systecon](#)

[The Streets of West Chester](#)

[Traditions Building and Development](#)

[West Chester Hospital](#)

[KEMBA Credit Union](#)
[Main Event Entertainment](#)
[NorthPoint Development](#)

[West Chester-Liberty Chamber](#)
[West Chester Township](#)
[Wetherington Golf and Country Club](#)

4Q-2019



West Chester Development Council | 513-755-1999 | 9577 Beckett Road, West Chester, OH, 45069
www.WestChesterDevelopment.com

West Chester Development Council | 9577 Beckett Road, West Chester, OH 45069

[Unsubscribe {recipient's email}](#).

[Update Profile](#) | [About Constant Contact](#)

Sent by veldridge@westchesteroh.org in collaboration with



Try email marketing for free today!